

## QuickFusio™ - Shaping Innovation



### Competitive cost

QuickFusio™ is optimized to meet customer expectations in terms of competitive **price positioning**. The use of standard **SAE-AS-38999** contacts in QuickFusio™ inserts and the unique mating mechanism enables **quick mating** and reduces overall cost.



### Simple wiring

By squaring a circle, Radiall has created an innovative design compatible with standard **SAE-AS-38999 size 11 accessories**. The unique design covers **any type of wiring combination** and is easy to install due to **The Radiall Touch: One finger mating technology**.



### Lightweight solution

Extremely compact, QuickFusio™ is **20% lighter** and **40% smaller** than the competition. This small, dense solution eliminates wasted space and reduces the overall weight. QuickFusio™ is **only 20 grams** per pair when equipped with size 22 contacts.



One finger mating - in a snap!

area offices  
local contacts

Our most important connection is with you.™

It's not just a slogan. It's a statement of our earnest desire to put you at the forefront of all our business practices. As part of Radiall's mission to be available and accessible, we make it a priority to have local offices around the globe ready and able to assist you – wherever you are, whenever you need us.



Our Most Important Connection is with You.™

### Europe

Address	PHONE / FAX	EMAIL
<b>FINLAND</b> - Radiall Finland PO Box 202 - 90101 Oulu	P: +358 407522412	infofi@radiall.com
<b>FRANCE</b> - Radiall SA 25 Rue Madeleine Vionnet - 93300 Aubervilliers	P: +33 (0)1 49 35 35 35	info@radiall.com
<b>GERMANY</b> - Radiall GmbH Carl-Zeiss Str. 10 - D 63322 Rödermark	P: +49 60 74 91 07 0 F: +49 60 74 91 07 10	infode@radiall.com
<b>ITALY</b> - Radiall Elettronica S.R.L. Via Della Resistenza 113 - 20090 Buccinasco Milano	P: +39 02 48 85 121 F: +39 02 48 84 30 18	infode@radiall.com
<b>NETHERLANDS</b> - Radiall Nederland BV Hogebrinkerweg 15b - 3871 KM Hoevelaken	P: +31 (0)33 253 40 09 F: +31 (0)33 253 45 12	infont@radiall.com
<b>SWEDEN</b> - Radiall AB Sollentunavägen 63 - 191 40 Sollentuna	P: +46 8 444 34 10	infose@radiall.com
<b>UNITED KINGDOM</b> - Radiall Ltd Profile West 950 - Great West Rd Brentford, Middlesex - TW8 9ES	P: +44 (0)1895 425000 F: +44 (0)1895 425010	infouk@radiall.com

### Asia

Address	PHONE / FAX	EMAIL
<b>CHINA</b> - Shanghai Radiall Electronics CO, Ltd N° 390 Yong He Rd SHANGHAI 200072 P.R.C	P: +86 21 66523788 F: +86 21 66521177	infosh@radiall.com
<b>HONG KONG</b> - Radiall Electronics (Asia) Ltd Flat D, 6/F, Ford Glory Plaza, 37-39 Wing Hong Street - Cheung Sha Wan - Kowloon - Hong Kong	P: +852 29593833 F: +852 29592636	infohk@radiall.com
<b>INDIA</b> - Radiall India Pvt. Ltd 25.D.II phase Peenya Industrial Area. Bangalore-560058	P: +91 80 283 95 271 F: +91 80 283 97 228	infoin@radiall.com
<b>JAPAN</b> - Nihon Radiall Shibuya-Ku Ebisu 1-5-2, Kougetsu Bldg 405 - Tokyo 150-0013	P: +81 3 34406241 F: +81 3 34406242	infojp@radiall.com

### Americas

Address	PHONE / FAX	EMAIL
<b>USA &amp; CANADA</b> - Radiall USA, Inc. 8950 South 52nd Street Ste 401 Tempe, AZ 85284	P: +1 480-682-9400 F: +1 480-682-9403	infousa@radiall.com

### Also Represented In...

AUSTRALIA AUSTRIA BELGIUM BRAZIL CZECH REPUBLIC DENMARK ESTONIA GREECE HUNGARY  
INDONESIA ISRAEL PORTUGAL LATVIA LITHUANIA TAIWAN THAILAND VIETNAM SOUTH AFRICA  
MALAYSIA NORWAY PHILIPPINES POLAND KOREA RUSSIA SINGAPORE SPAIN SWITZERLAND

D7P004DE - 2015 Edition

www.radiall.com

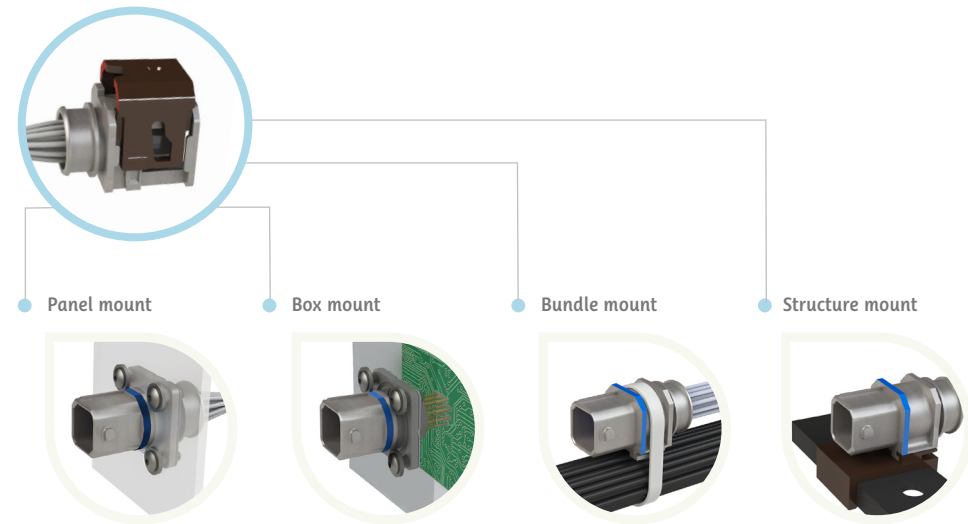
QuickFusio™

Radiall

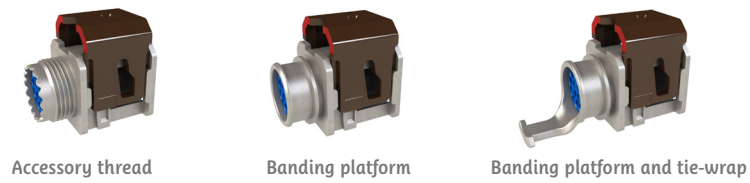


## QuickFusio™ Range

One versatile range for any wiring system

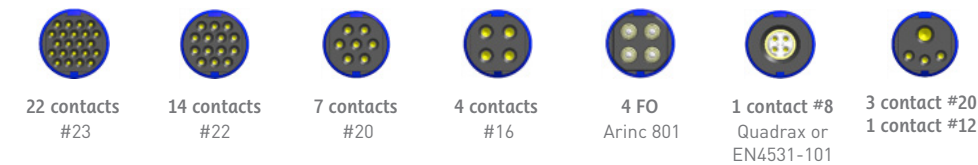


Plugs and receptacles are available in three different output options which can adapt to any wiring.



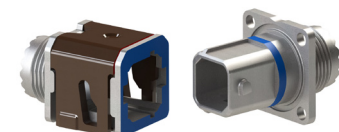
### Large range of inserts for standard SAE-AS-38999 series II contacts

Pin contacts per M39029/58 (or EN 3155-008) and socket contacts per M39029/57 (or EN3155-003).



### FOD proof shell keying

6 different shell coding through mechanical shape and shell coloring. Color codings are A (purple), B (blue), C (green), D (yellow), E (pink), F (white). One universal "N" coding is also available.



Radial's experience in EWIS applications and ability to design innovative solutions makes QuickFusio™ the perfect solution for cabin interiors and EWIS applications. Combining high performance with reduced cost, this light weight, tool less connector features The Radial Touch: one finger mating - in a snap!

## Performance

Radial's QuickFusio™ range is designed for harsh aerospace applications and is qualified according to industry standard requirements.

### Materials & finishes

- Shell: high grade thermoplastic (nickel plated)
- Insert retention clip: beryllium copper
- Insert: high grade thermoplastic with metallic retention clip
- Contact: copper alloy, gold plated over nickel
- Slide lock (plug): high grade thermoplastic
- O-ring, grommet and interfacial seal: fluorosilicone elastomer
- Mounting plate (receptacle): stainless steel

### Mechanical characteristics

- Mating/unmating: 500 cycles
- Random vibration: EN2591 - 403 - method B - Level G (278 g)
- Shock: EN2591-402 (50 g)
- Insert retention in shell: 254 N

### Electrical characteristics

- Shell to shell conductivity: 2.5 mohms max
- Lightning strike: 5 kA – 1600 V
- Magnetic permeability: <2 μ
- Insulation resistance: > 5,000 Mohms

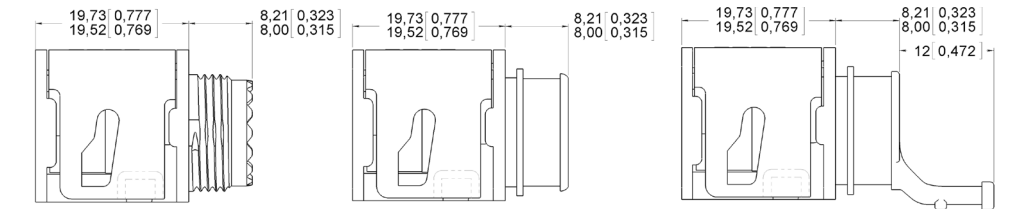
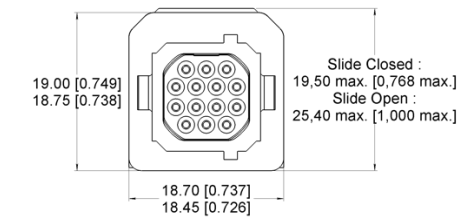
### Environmental characteristics

- Temperature range: -65°C to +175°C
- Salt spray: 500 hours
- Altitude immersion: 55,000 feet
- Air leakage: 16x10<sup>-6</sup>m<sup>3</sup>/h according to EN2591-312 method B
- Flammability: EN2591-317 FAR 25.853
- Smoke and Toxicity: FAR 25.853 Appendix F
- Fluids: EN 2591-315

Size of Contacts	23	22	20	16	12	8
Withstanding Voltage (V)	500		1500			
Max Current rating (A)	5	5	7.5	13	23	46

## Dimensions & Weight\*

### Plug

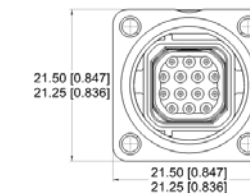


Accessory thread (9.65 g)

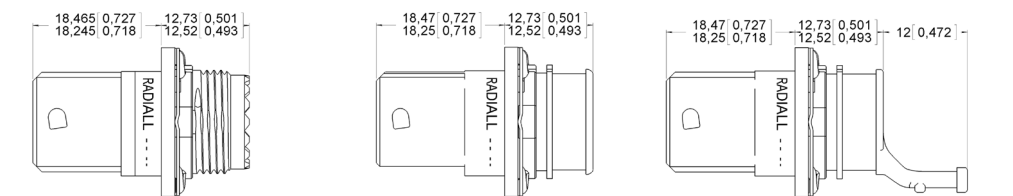
Banding platform (9.75 g)

Banding platform and tie-wrap (10.10 g)

### Receptacle



Square flange

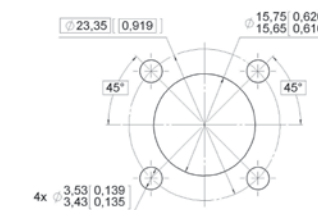


Accessory thread (7.70 g)

Banding platform (7.80 g)

Banding platform and tie-wrap (8.10 g)

### Panel cut-out



\*Connector weight includes insert only without contacts.