

Radiall is a global leader in the design, development and manufacturing of innovative interconnect solutions. Dedicated to understanding our customers' needs since 1952, we have built an award winning reputation in engineering ingenuity by providing a constant flow of creative system solutions to the telecom, aerospace, defense, instrumentation and medical markets.

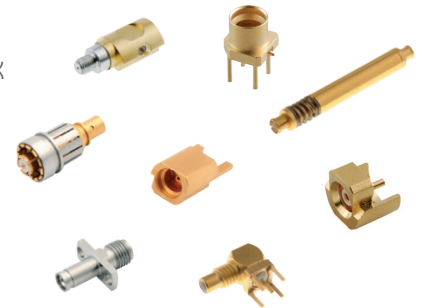
RF & Microwave Switches

- High reliability RAMSES patented modular technology, no soldered wires
- More than 10 million cycles
- Frequency range up to 50 GHz
- Comprehensive range of SPDT, DPDT, DP3T, SPnT (1x3 through 1x12)
- Terminated & unterminated versions
- Smallest subminiature SPnT & TVAC series
- TVAC switches: thermal vacuum
- High performance Titanium & Platinum switches with long life span & guaranteed repeatability 0.03dB on IL
- SPDT Slim Line Series: Surface Mount Technology (SMT)
- Low PIM switch series - 160dBC: passive intermodulation



RF Coaxial Connectors

- Comprehensive range of RF connectors up to 65 GHz
- SMA, SMP, SMPM, N, TNC, SMB, SMC, SSMC, MMCX, MCX, BNC, QRE
- Interfaces per MIL C-39012
- Locking connectors: SMP, TNC & SMB
- Quick Lock Formula (QLF) certified QMA & QN
- MIL-PRF-39012 QPL connectors
- Compact & Low intermodulation Solution 4.3-10 & 4.1-9.5
- Blind mate: BMA, SBMA, SMP, SMPM, MMBX
- Board-to-Board RF interconnects: IMP, MMBX, SMP, SMPM & SMP-MAX
- Waterproof, stainless steel, light weight, hermetic & reverse polarity connectors available
- Switching connectors: Moebius, MC-Card, SMA, QMA, QN, N & TNC
- Available in AEP brand products



TestPro Cable Assemblies

- TestPro2 DC-50 GHz, DC-67 GHz
- TestPro3 DC-26.5 GHz, DC-40 GHz
- TestPro4.2 DC-18 GHz
- TestPro5 DC-26.5 GHz
- TestPro8 DC-18 GHz
- Connector series: SMA, SMA 3.5, SMA 2.9, SMA 2.4, SMA 1.85, NMD 2.9, N, TNC, PC7
- 5,000 mating/unmating life cycles
- Flex life: over 20,000 flex cycles per MIL IEC966-1
- Phase & loss stability for long calibration intervals
- Low profile connector configurations
- TVAC options available
- Phase matching options



SHF Cable Assemblies

- SHF2.2UF DC-40 GHz, SHF2.2M DC-40 GHz, SHF3 DC-40 GHz, SHF3M DC-40 GHz, SHF4M DC-40 GHz, SHF4.2M DC-30 GHz, SHF4.6M DC-32 GHz, SHF5 DC-26.5 GHz, SHF5M DC-26.5 GHz, SHF5UF DC-26.5 GHz, SHF8 DC-18 GHz, SHF8M DC-18 GHz, SHF13 DC-9.5 GHz
- Connector series: SMPM, SMP, SMP Lock, SSMA, MCX, SMA, SMA 2.9, SMA 3.5, QMA, QN, BMA, TNC 18, N 18
- Phase matching options
- Armored options available
- Light weight & airframe cables



RF Cable Assembly Models

- Short bend
- Hand-formable
- Semi-rigid
- RG flexible
- AEP195FR through AEP600FR
- Custom cable assemblies and lengths available
- Available in AEP brand products



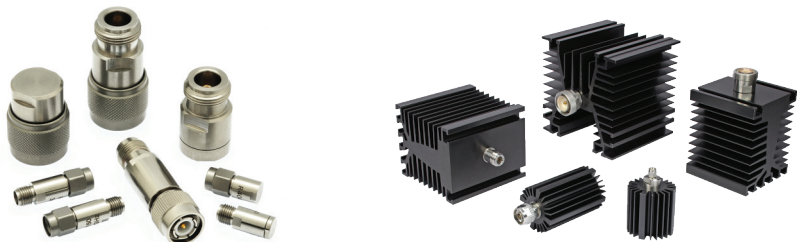
Antennas

- Manpack, vehicle & handheld radios
- UAV/UGV2 & other sensors
- Airborne, onboard & external
- Antenna frequency: 30 MHz & up
- Single, dual & multi-band, external or embedded
- Active & passive GPS (L1 & L1/L2)
- Overmolded, whip, patch printed
- N-type, TNC, SMA & specialty connectors
- Custom design applications, low to high power
- In-house antenna measurement system
- MIL-STD 810 compliant
- Available in AEP brand products



RF & Microwave Terminations & Attenuators

- Comprehensive range of components up to 50 GHz
- Type N, BNC, TNC, SMA, SMA 3.5, SMA 2.9, 2.4 mm
- Microwave filters
- Medium & high power terminations, couplers, attenuators
- Rotary joints, phase shifters
- Low PIM
- Terminations available in AEP brand products
- Platinum Series Terminations & Attenuators



RF Adapters

- In-series
- Between-series
- Push on
- Quick disconnect
- Precision adapter
- 50 & 75 Ohm
- Straight, bulkhead, panel, flange mount, press in, right angle, sealed, hermetic
- Available in AEP brand products



Banana Plugs

- 2 mm, 4 mm & adapters
- Excellent electrical conductivity
- Very low contact resistance
- Robust contact point pressure when connected
- Outstanding durability for high number of mating cycles

